

Medical Imaging: Clinical applications of MRI

The research activity in the field of Magnetic Resonance Imaging (MRI) is characterized by a high degree of collaboration with other research groups. This includes local partners at the Dept of Physics, the MR Cancer Group at the Dept of Circulation and Medical Imaging, NTNU, and the Clinic of Radiology and Nuclear Medicine at St.Olavs Hospital.

Our largest current research activity is within different applications of diffusion weighted MRI in cancer imaging, but we also have other smaller projects. If you enjoy image processing and data analysis, if you enjoy working with people from other disciplines, if you are motivated by seeing practical applications of basic physics, then you will thrive in the field of medical imaging.

For more info, contact associate professor Pål Erik Goa, pal.e.goa@ntnu.no, office D4-160. tlf: 73593634.

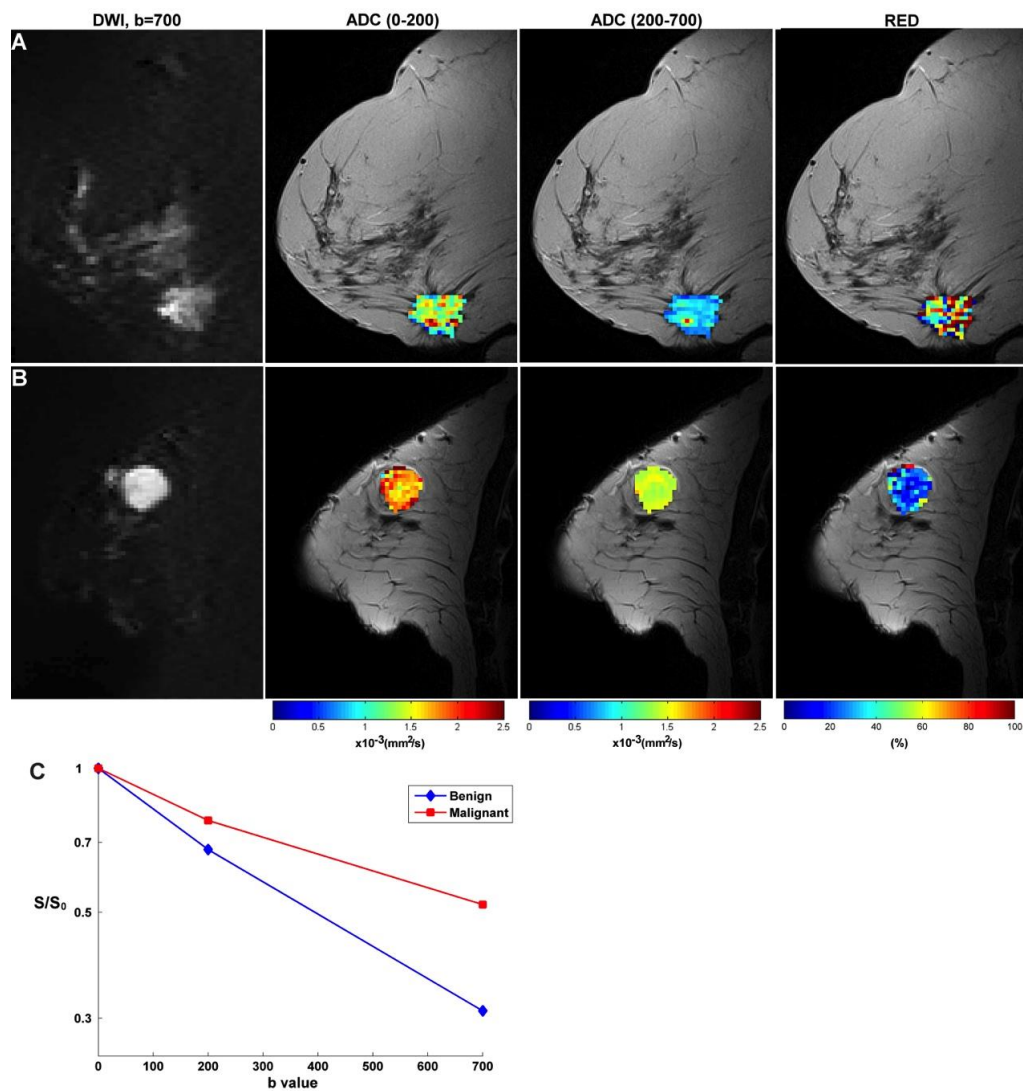


Figure 1. Example of how diffusion-weighted MRI can be used to differentiate benign and malignant tumors in breast cancer (J.Teruel et.al, submitted).